

DZBX-2MT FEATURES



- | Blast parts that cannot be treated with a tumbling blast application
- | Produces superior processing for aluminum die-casting parts
- | Designed to safely use zinc abrasive lowering the risk of explosions
- | Compact size
- | Easy installation due to small footprint
- | Indexing table allows operator to easily load/unload

ZINC BLAST MACHINE

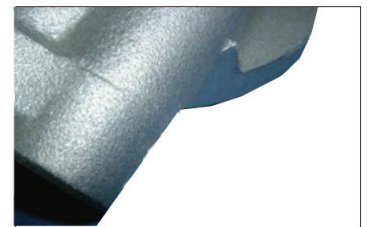
Transmission Case



Engine Parts



Samples of Casting Deburring



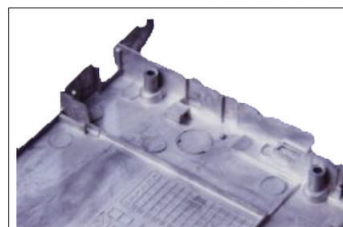
Automotive Parts



HDD Case

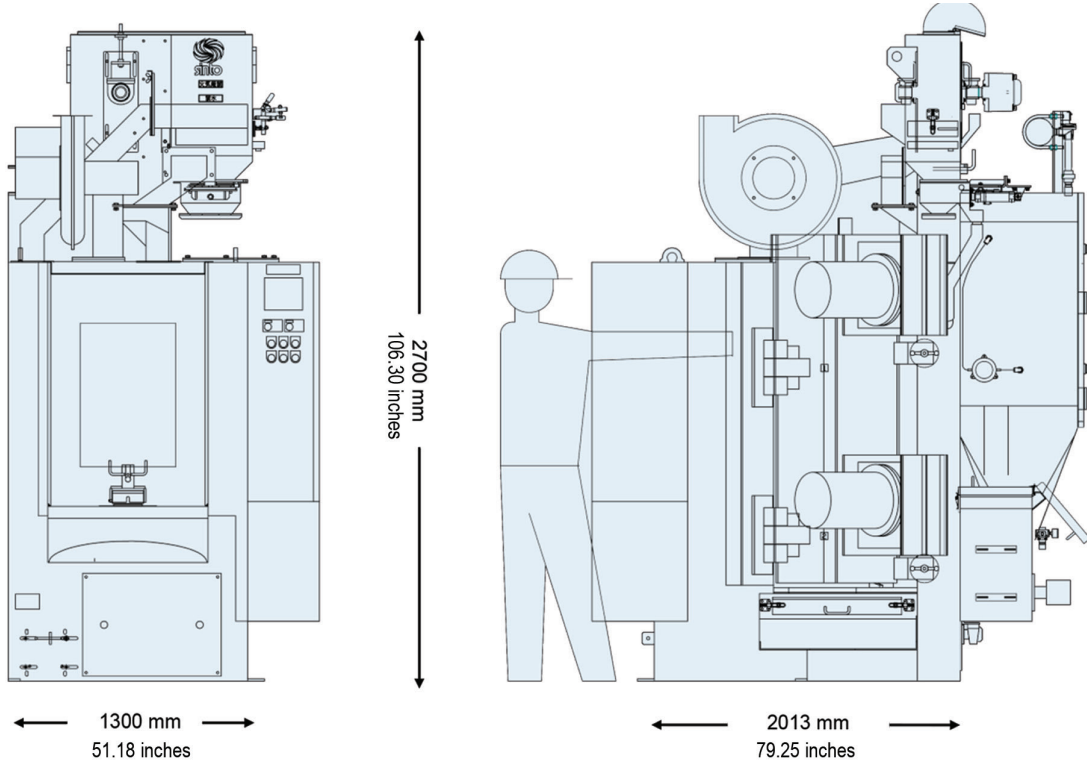


Samples of Pin Deburring



DZBX-2MT

DIMENSIONS



SPECIFICATIONS

Machine Description	DZBX-2MT
Capacity	
Blasting area	Ø 16" x 24" H /jig (Max) Ø 400mm x 600mm H /jig (Max)
Weight of work piece (including jig)	44 lbs/jig (Max) 20 kg/jig (Max)
Motor capacity	7.5 hp (2 units) 5.5kW x 4P (2 units)
Size of workpiece	Dia. 6" x 8" L(Max) Dia. 150 x L 200 (Max)
Hanger	
Number of hangers	2
Dust Collector	
Type	Cartridge filter



SINTO AMERICA, INC.

SINTOKOGIO GROUP
 3001 W. Main Street, PO Box 40760
 Lansing, MI 48901
 Tel: 517 371 2460 Fax: 517 371 4930
 Web: www.sintoamerica.com Email: sales@sintoamerica.com

