

BTX SERIES

FEATURES

- ▮ Rubber, reinforced belt machine
- ▮ Compact size with integral dust collector
- ▮ No foundation required
- ▮ Does not require field assembly
- ▮ New wheel model, TD 120: direct drive, compact, and reduced number of wear parts
- ▮ Door locking system reduces shot leaks
- ▮ Lower operational costs



BTX-2



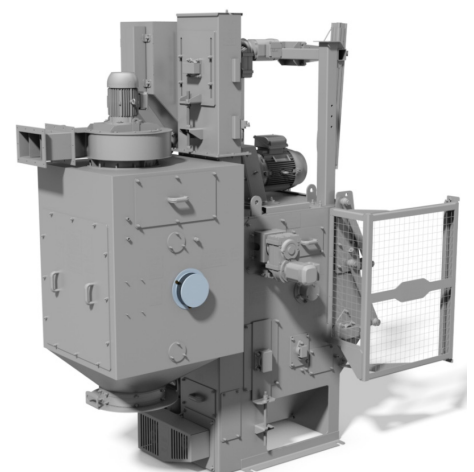
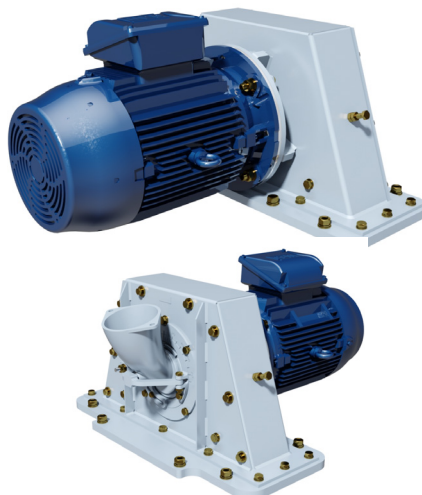
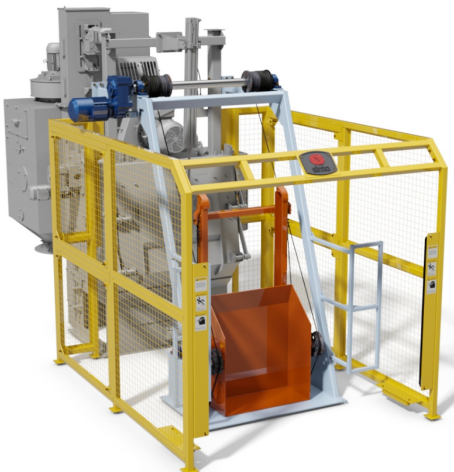
BTX-1

RUBBER BELT MACHINE

AUTOMATIC LOADING SYSTEM WITH LOAD BUCKET FOR CONVENIENCE, PRODUCTIVITY AND SAFETY

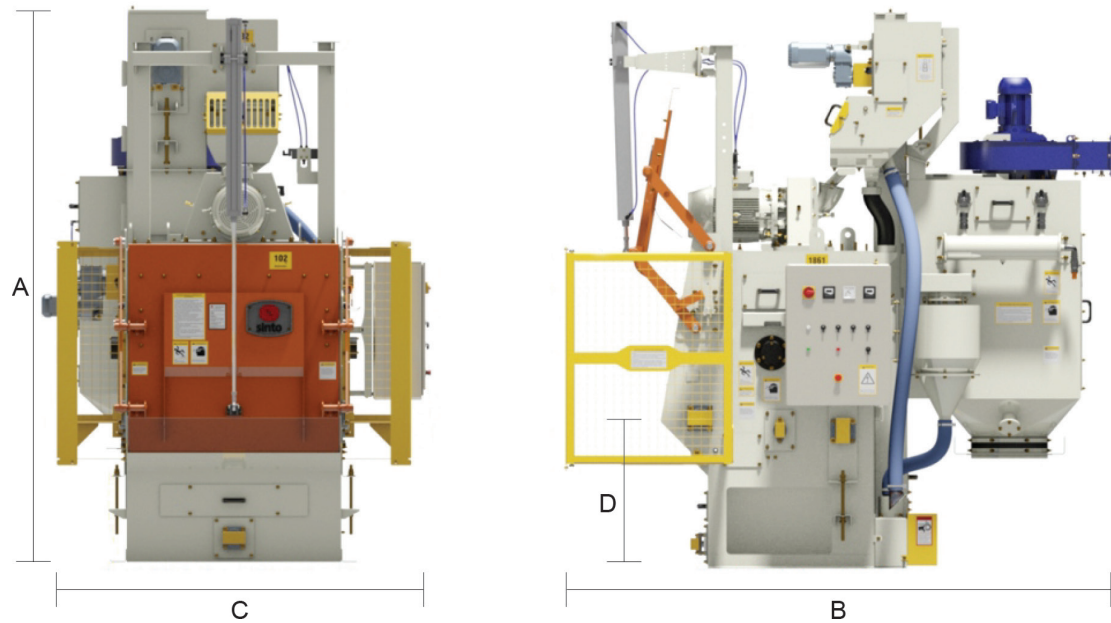
COMPACT AND MODERN, NEW WHEEL MODEL MAXIMIZES PERFORMANCE WITH LOW MAINTENANCE COSTS

SAFETY DEVICE DESIGNED TO MAINTAIN CORRECT PRESSURE EQUILIBRIUM IN THE DUST COLLECTOR



BTX SERIES

DIMENSIONS



SPECIFICATIONS

Model Machine	BTX-1	BTX-2
Equipment Capacity		
Maximum Weight (limited by volume)	331 lb (150 kg)	661 lb (300 kg)
Maximum Volume	3 cu ft (85 L)	6 cu ft (170 L)
Equipment Capacity Parts		
Maximum Unit Weight	44 lb (20 kg)	66 lb (30 kg)
Maximum Unit Length	12" (300 mm)	12" (300 mm)
Technical Information		
Height (A)	124" (3150 mm)	124" (3150 mm)
Length (B)	95" (2416 mm)	122" (3105 mm)
Width (C)	80" (2040 mm)	86" (2187 mm)
Discharge Height (D)	43" (1092 mm)	38" (966 mm)
Total Weight	3780 lb (1715 kg)	5047 lb (2290 kg)
Loading Door	Manual	Pneumatic
Blast Wheel Motor	10 HP	20 HP
Blast Wheel Rotational Speed	3600 rpm	3600 rpm
Installed Total Power	15 HP	28 HP



SINTO AMERICA, INC.

SINTOKOGIO GROUP
 3001 W. Main Street, PO Box 40760
 Lansing, MI 48901
 Tel: 517 371 2460 Fax: 517 371 4930
 Web: www.sintoamerica.com Email: sales@sintoamerica.com

